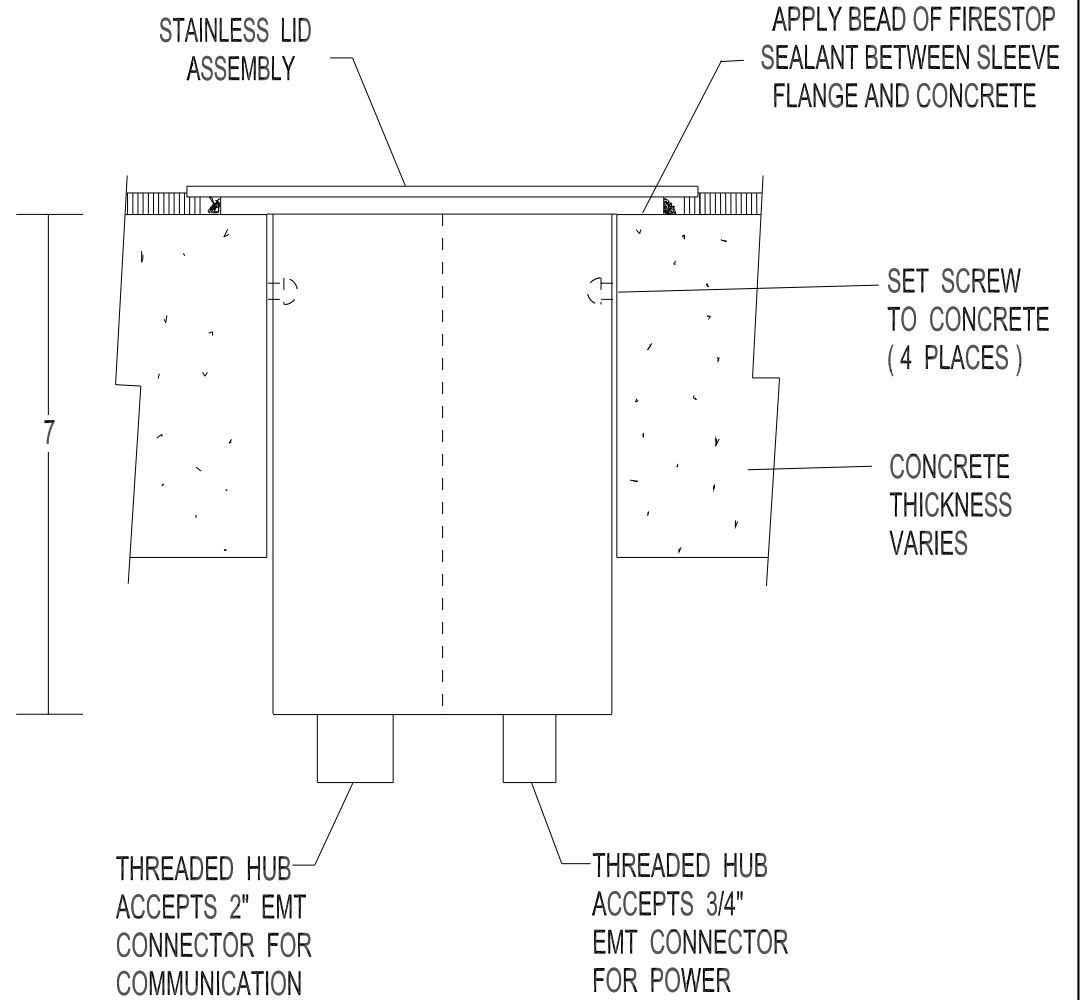


REMOVEABLE LID c/w 1 1/2" K.O. FOR COMMUNICATION CONDUIT CONNECTOR & 3/4" KO FOR POWER CONDUIT CONNECTOR



SIDE SECTION



WELLMARK ELECTRIC
PH: 519-650-4495
wellmarkelectric.com



CAN/ULC S115 - 2 hr F
ASTM E814 - 2 hr F

MATERIALS: LID ASSEMBLY: 1/8" STAINLESS STEEL BODY: 12 GA & 16 GA NICKEL COATED STEEL

NOTES: - INSTALLATION REQUIRES 5" CORE DRILL (MAX 5 1/8") - INDOOR & IN DRY LOCATIONS ONLY



TITLE
SERIES 470 POKE THROUGH FLOOR BOX

DIMENSIONS IN INCHES UNLESS OTHERWISE SPECIFIED	SCALE	NTS	PART NO. 470-5-7-FRN-3/4P-2C
DR. BY	DATE	01/17	
APP. BY	DATE		