


SIDE SECTION



  
**WELLMARK ELECTRIC**  
 PH: 519-650-4495  
 wellmarkelectric.com  
 CAN/ULC S115 - 2 hr F  
 ASTM E814 - 2 hr F

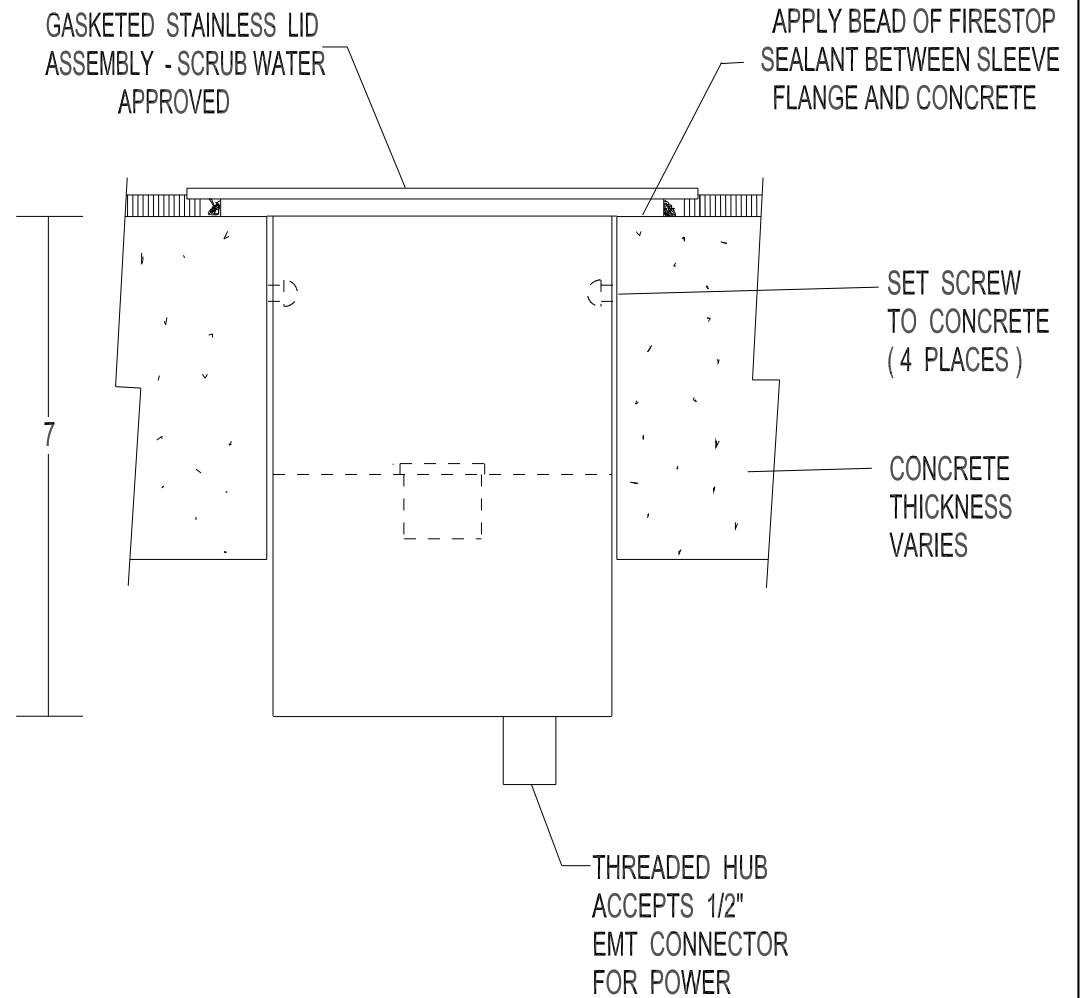
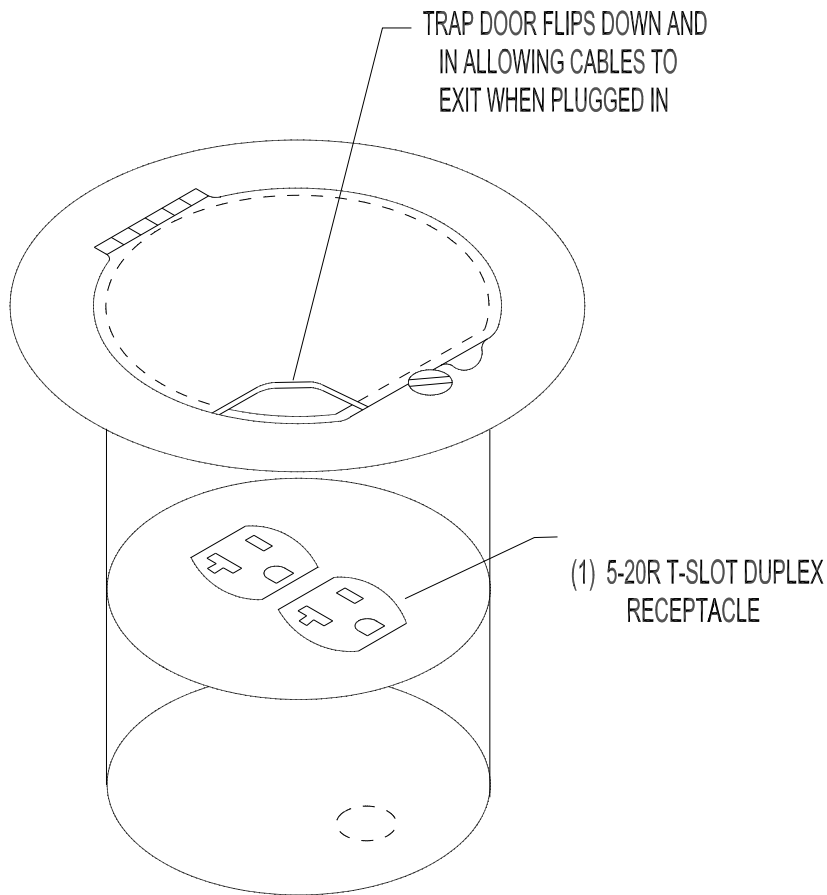
MATERIALS: LID ASSEMBLY: 1/8" STAINLESS STEEL BODY: 12 GA & 16 GA NICKEL COATED STEEL

NOTES: - INSTALLATION REQUIRES 4" CORE DRILL (MAX 4 1/8") - INDOOR & IN DRY LOCATIONS ONLY


  
**Wellmark**  
 ELECTRIC INC

TITLE  
 SERIES 470 POKE THROUGH FLOOR BOX

	DIMENSIONS IN INCHES UNLESS OTHERWISE SPECIFIED	SCALE	NTS	PART NO.
	DR. BY	DATE	01/17	470-4-7-3
	APP. BY	DATE		



SIDE SECTION



WELLMARK ELECTRIC  
PH: 519-650-4495  
wellmarkelectric.com



CAN/ULC S115 - 2 hr F  
ASTM E814 - 2 hr F

MATERIALS: LID ASSEMBLY: 1/8" STAINLESS STEEL BODY: 12 GA & 16 GA NICKEL COATED STEEL

NOTES: - INSTALLATION REQUIRES 4" CORE DRILL (MAX 4 1/8") - INDOOR & IN DRY LOCATIONS ONLY



TITLE

SERIES 470 POKE THROUGH FLOOR BOX

DIMENSIONS IN INCHES  
UNLESS OTHERWISE SPECIFIED

SCALE NTS

PART NO.

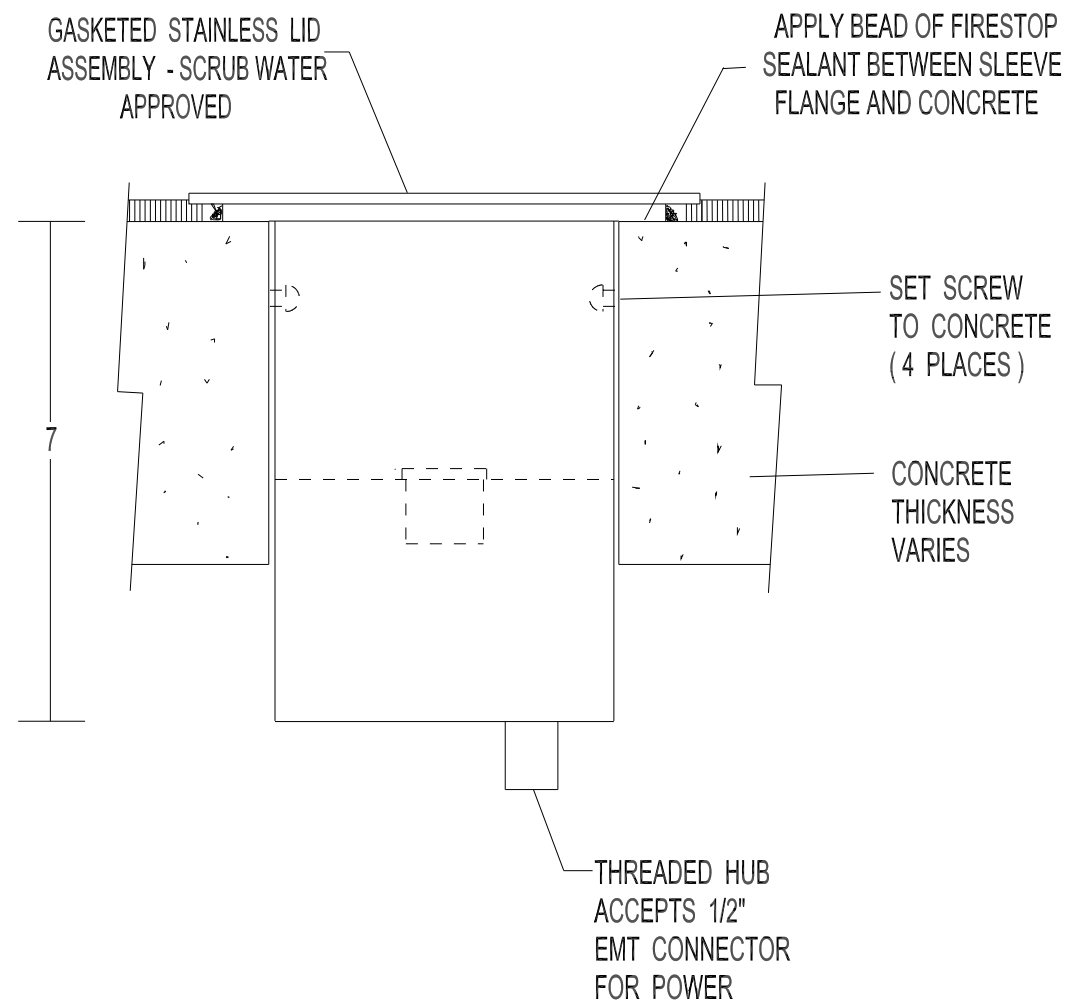
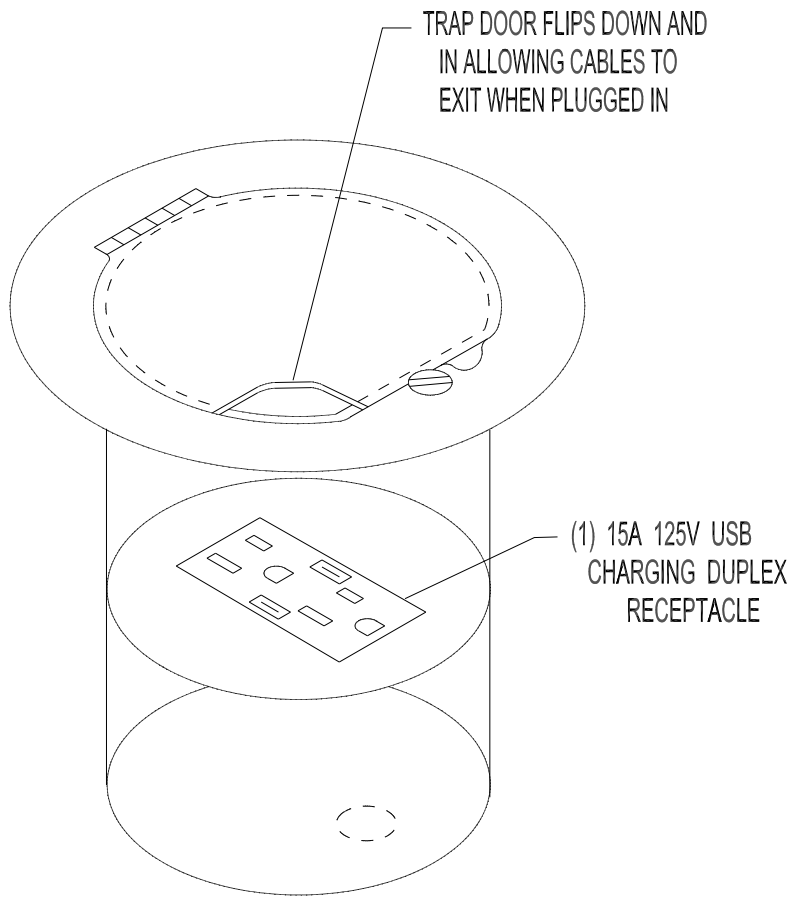
DR. BY

DATE 01/17

470-4-7-5

APP. BY

DATE




SIDE SECTION



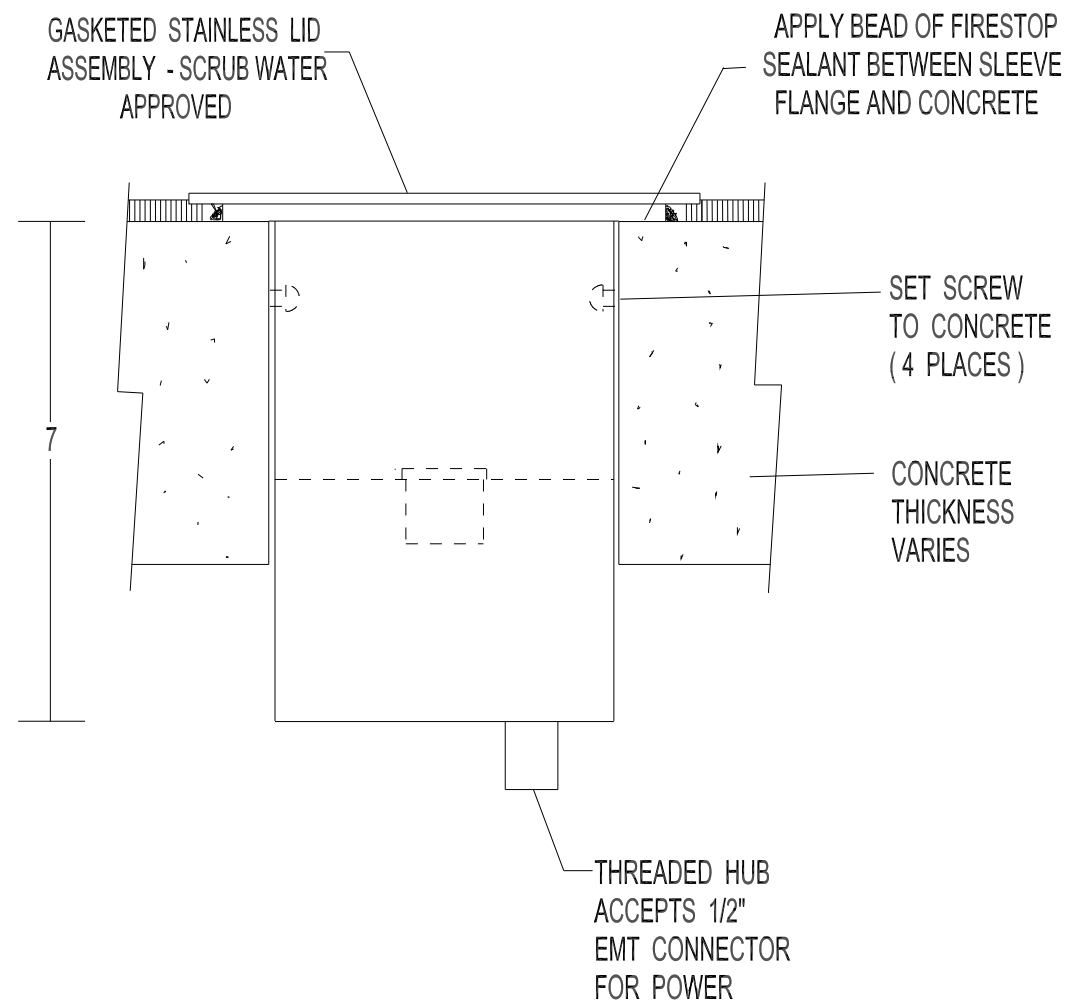
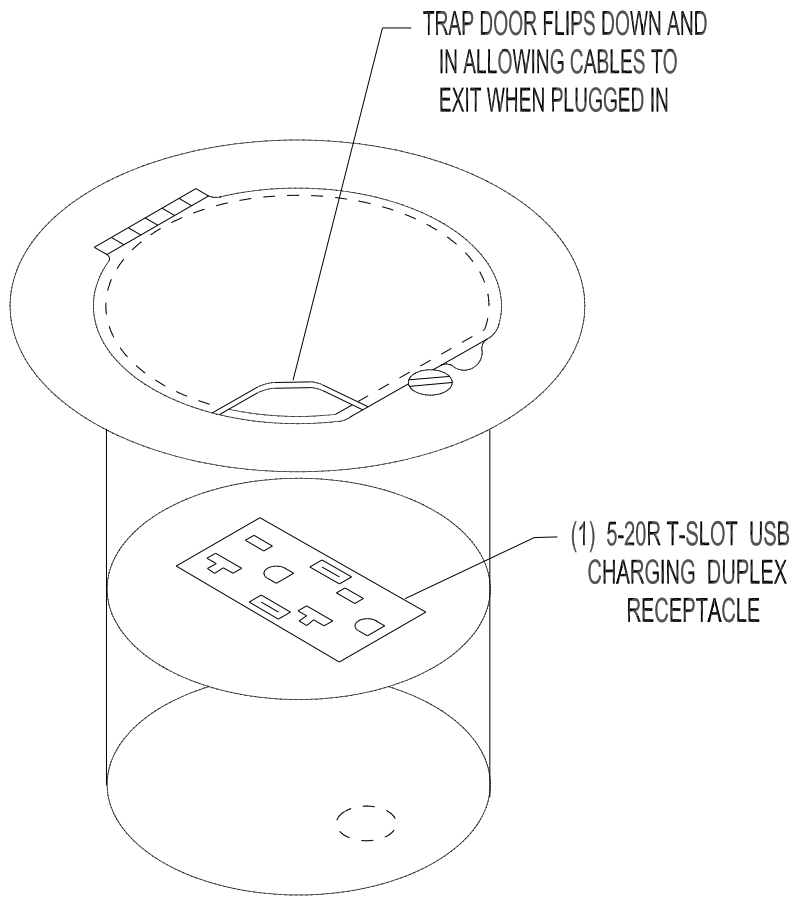
  
 WELLMARK ELECTRIC  
 PH: 519-650-4495  
 wellmarkelectric.com  
 CANULC S115 - 2 hr F  
 ASTM E814 - 2 hr F

MATERIALS: LID ASSEMBLY: 1/8" STAINLESS STEEL BODY: 12 GA & 16 GA NICKEL COATED STEEL

NOTES: - INSTALLATION REQUIRES 4" CORE DRILL (MAX 4 1/8") - INDOOR & IN DRY LOCATIONS ONLY


 TITLE  
 SERIES 470 POKE THROUGH FLOOR BOX

	DIMENSIONS IN INCHES UNLESS OTHERWISE SPECIFIED	SCALE	NTS	PART NO.
	DR. BY	DATE	01/17	470-4-7-3-USB
	APP. BY	DATE		



SIDE SECTION



  
**WELLMARK ELECTRIC**  
 PH: 519-650-4495  
 wellmarkelectric.com  
 CANULC S115 - 2 hr F  
 ASTM E814 - 2 hr F

MATERIALS: LID ASSEMBLY: 1/8" STAINLESS STEEL BODY: 12 GA & 16 GA NICKEL COATED STEEL

NOTES: - INSTALLATION REQUIRES 4" CORE DRILL (MAX 4 1/8") - INDOOR & IN DRY LOCATIONS ONLY



TITLE  
 SERIES 470 POKE THROUGH FLOOR BOX

	DIMENSIONS IN INCHES UNLESS OTHERWISE SPECIFIED	SCALE	NTS	PART NO.  470-4-7-5-USB
	DR. BY	DATE	01/17	
	APP. BY	DATE		